



Advanced formula for
extreme ground
adhesion and growth
performance.



A product by



Australian Environmental Solutions



ENGINEERED FOR EXTREME CONDITIONS



Introducing EnviroLoc® Airfield Hydromulching BFM

Specifically engineered for superior erosion control against jet blast while providing optimal conditions for rapid and sustainable vegetation growth.

Based on the market-leading EnviroLoc® BFM, our airfield variant introduces an airport grade binder to achieve immediate erosion control against jet blast, whilst still creating a high-performing growth medium matrix.

The flexible yet stable matrix immediately bonds to the surface, while the combination of thermally refined wood fibres and biopolymers provide greater water holding capacity for more complete germination and faster establishment of vegetation.



- Proven ability to instantly reduce and prevent erosion by jet blast
- Eliminates potential FOD issues seen with traditional pins/batons and Netlon
- Reduction in soil preparation, reducing costs and increasing installation time
- Improved plant germination due to higher water retention
- Environmentally sustainable
- Extensively tested with proven results
- Australian-made

3D Fibre Matrix Technology

The unique blend of chemical and mechanical bonding techniques enable the engineered growth medium in place to promote seed germination. The following benefits support the engineered formula:

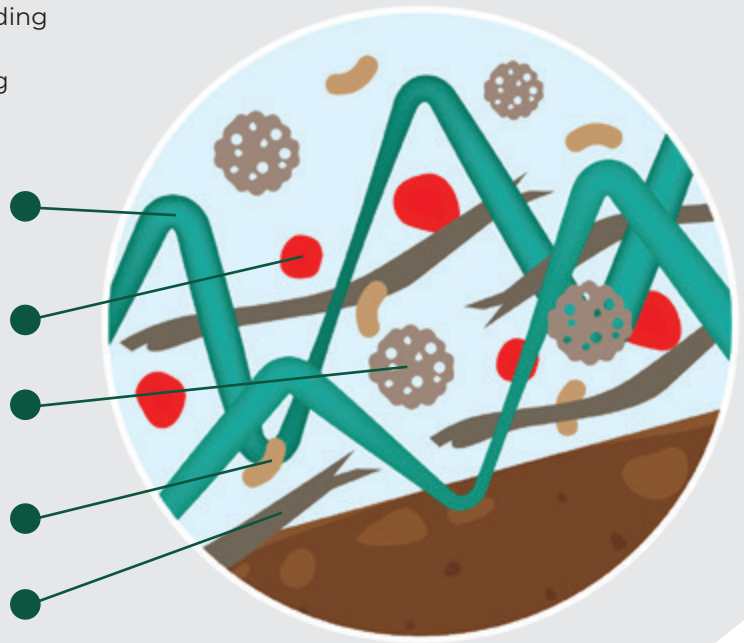
100% thermally refined wood fibres produce high yields, extensive coverage, and eliminate potential weed seeds and pathogens.

Biopolymers and water absorbents are 100% non-toxic to enhance overall performance and project success.

Micro-pore particles enhance water and nutrient retention while contributing to erosion control effectiveness.

Granular cell dispersion ensures that product elements are mixed and distributed evenly.

Granular cell dispersion ensures that product elements are mixed and distributed evenly. Interlocking matrix fibres increase strength and durability.



8 Essential Benefits



Bird deterrent seed mix

Bird deterrent seed mix can be used to reduce the risk of bird activity in the area.



Lasting Performance

Immediately bonds to the soil surface and effectively reduces turbidity of runoff which increases functional longevity.



Higher Water Retention

Thermally refined wood fibres and micro-pore particles deliver up to 15 times more water-holding capacity over standard hydromulch.



Weed, Pest & Pathogen Free

Our solution is free from weeds, pests, diseases and pathogens.



Faster Growth

As well as retain more water, the wood fibres also provide a stable temperature to aid the germination process.



Sustainability

Absorbs water rapidly to form a homogenous slurry that ensures evenly distributed strands of grass.



Scientifically Proven

Contains 100% of the highest quality materials, while scientific soil analysis ensures the best chance of success.



Guaranteed Results

Our products are developed by leading agronomists, horticulturists and soil scientists, and are backed by our results guarantee.

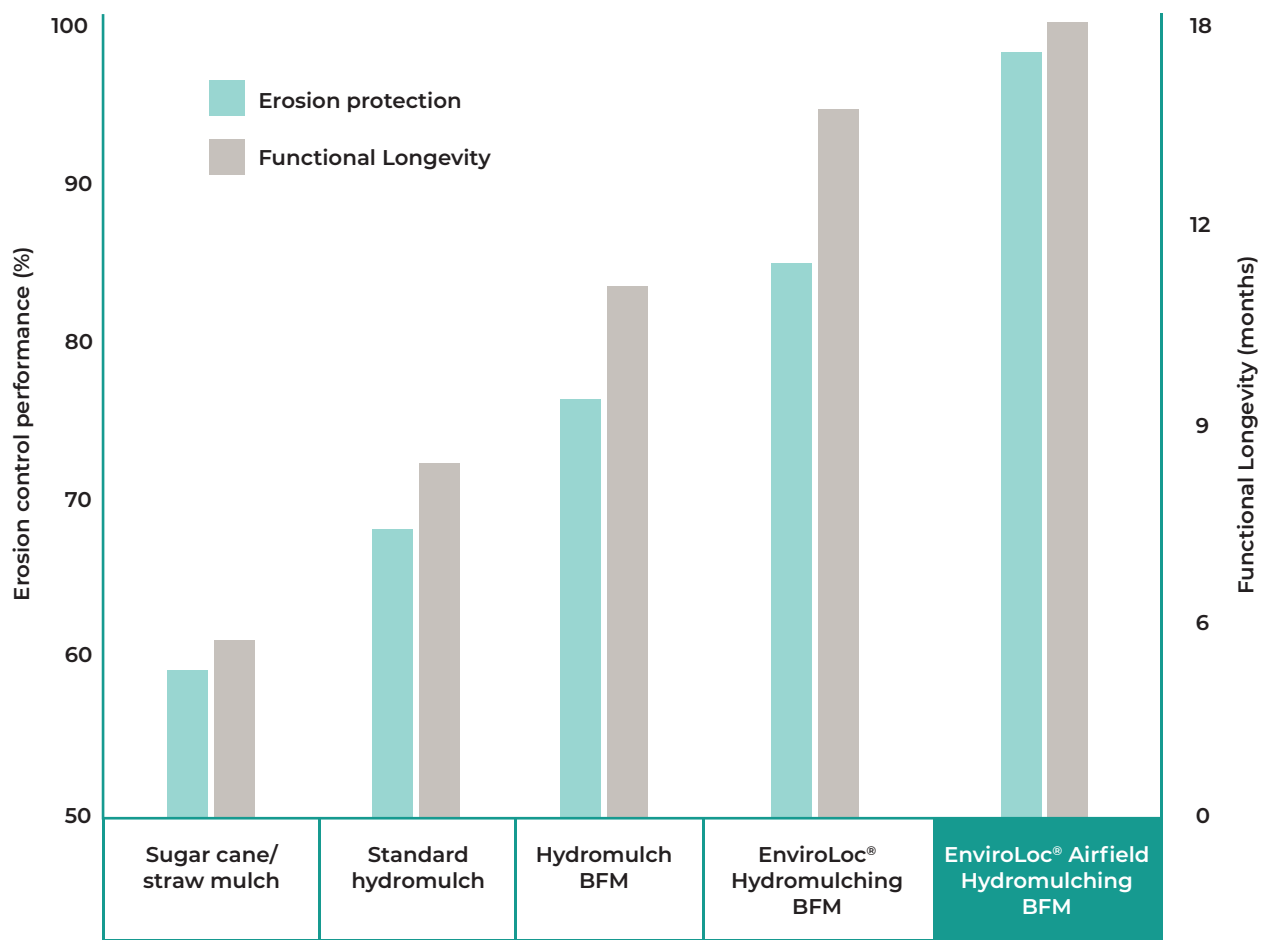
Why does it work so well?

Erosion Control Performance

The adaptable yet secure matrix works to establish growth, control erosion and increase functional longevity. This allows for dormancy throughout dry periods and ensures the stability of the revegetation efforts.

Functional Longevity

EnviroLoc® Hydromulching Airfield BFM protects for up to 18 months in conditions where rainfall is limited and supplementary irrigation is not available to support prompt vegetation establishment.





Tested for strength

EnviroLoc® Airfield Hydromulching BFM has been extensively tested for its erosion control strength and its ability to provide the fastest possible growth results. Research and development of the mulch were conducted over an extensive 2-year period, with the solution exposed to multiple jet blast passes.

The integrity of the solution was able to withstand Category 3 hurricane wind speeds above 120km/h.



Application

EnviroLoc® Airfield Hydromulching BFM is consistently mixed by inbuilt agitators within the holding tanks of our purpose-built HydroRig equipment to ensure that a uniform application is achieved. The solution is applied via cannon or hose directly onto the substrate to form a flexible yet durable bonded fibre matrix. This application acts as a protection blanket, providing superior and instant erosion control, and an optimal growth medium.

Common application methods:

Specialist purpose-built equipment enables up to 50,000 square meters of product coverage per day. This technology will significantly reduce project time and costs.



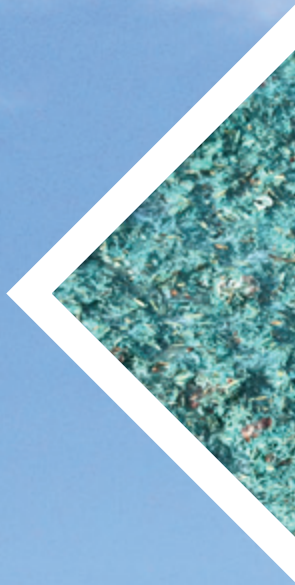
Hose

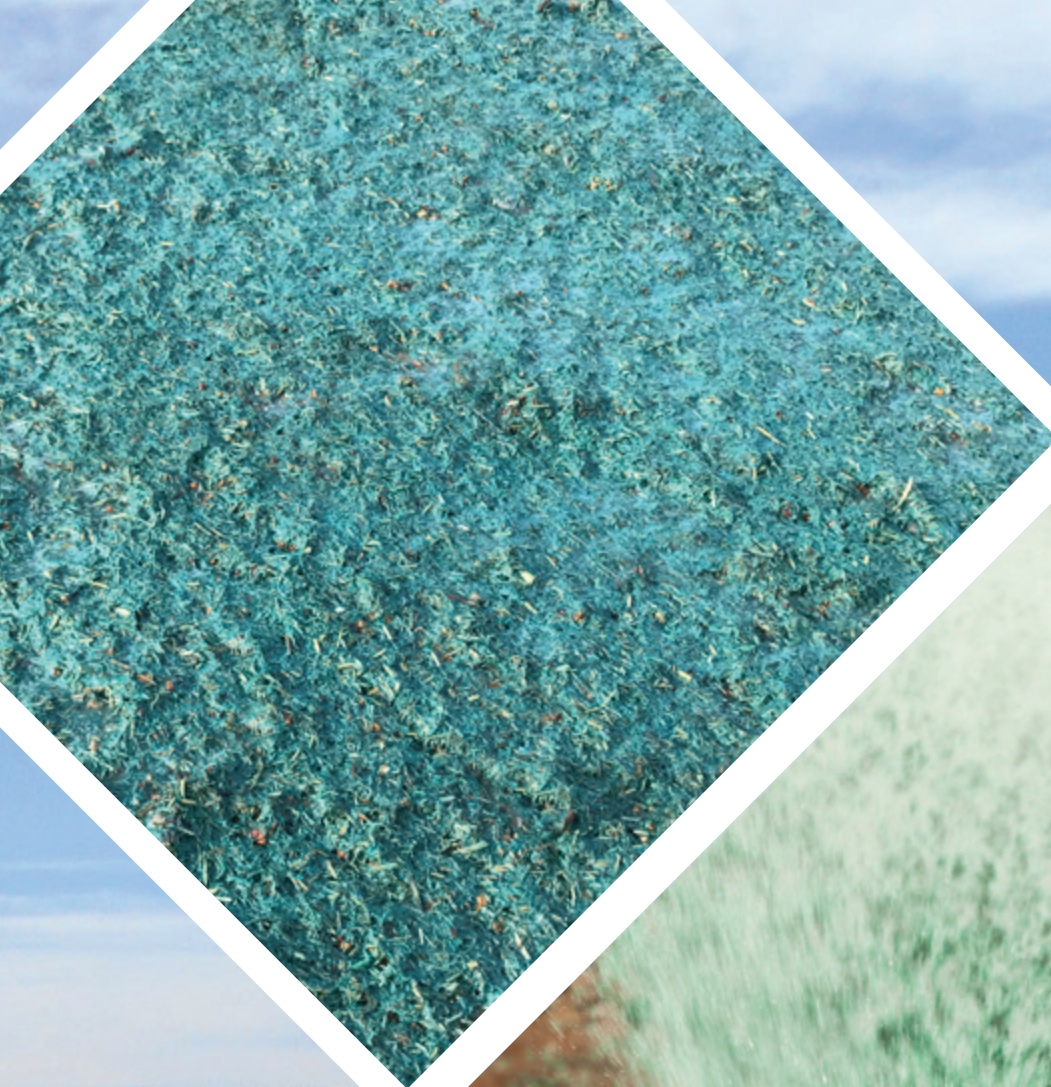
With the capacity to reach distances over 400m, hoses supported by pumps can safely access hard to reach, more intricate areas.



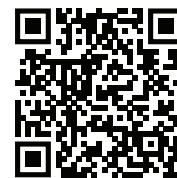
Cannon

Hydraulic truck-mounted cannons are often utilised to apply the product from a distance of over 100 meters efficiently. Where required, dual cannons can be used to apply the product from both sides of the spray zone simultaneously.





EnviroLoc® Airfield is formulated to meet the highest standards of environmental efficiency



Scan me



100% Success Rate Guaranteed



SUPPLY

Our products and services are supported by the expertise and consultation of our specialist team of agronomists, horticulturalists and soil scientists. EnviroLoc® Airfield is made with the highest quality materials which are extensively tested for safety and performance on some of the most depleted and degraded soils in Australia. We are confident you will achieve project success first time.



APPLY

Our highly trained technicians utilise specialist equipment to apply products with precision and accuracy, meeting Australian Safety, Environmental and Quality standards. Surpassing this, our ability to utilise drone technology for the application of solutions improves the quality and efficiency of our operations. Each project comes with a tailored Quality Management Plan and an Inspection & Test Plan (ITP) to identify and record project specifications and requirements.



GUARANTEE

Our scientifically developed solutions and expert application methods enable us to deliver an end-to-end solution which makes this guarantee possible. Each project solution is tailored for specific site requirements and longevity targets which requires a tailored guarantee to ensure success for your project.



Australian
Owned & Made