



EnviroLoc[®]

Hydromulching BFM

Advanced formula
for superior growth
performance



A product by

 **ERIZON**

Australian Environmental Solutions



ADVANCED FORMULA FOR SUPERIOR GROWTH PERFORMANCE



Introducing EnviroLoc® BFM

EnviroLoc® BFM (Bonded Fibre Matrix) is a premium hydromulching solution engineered for superior performance in the areas of erosion control and growth establishment. Thermally refined wood fibres increase water retention and airflow exchange for improved seed germination.

These wood fibres are engineered to withstand challenging environmental conditions where high levels of water velocity resistance will be required. The fibres hold up to 20 times their own weight of water and provide extensive moisture retention around the seed.

The application is a two pass process. The first pass of EnviroLoc® BFM is essential to maximise the seed-to-soil contact required for successful root establishment. A second pass provides thermal stabilisation, increased water retention and protection from fauna to give the best possible chance of sustainable growth.



- **Increased erosion protection**
- **Provides greater soil contact**
- **Faster growth times**
- **Higher density of vegetation**
- **Improved water retention**
- **Thermally refined fibres for optimal water filtration and airflow**
- **Environmentally friendly and sustainable**

3D Fibre Matrix Technology

The unique blend of chemical and mechanical bonding techniques keeps the engineered growth medium in place to promote seed germination. The following benefits support the engineered formula:

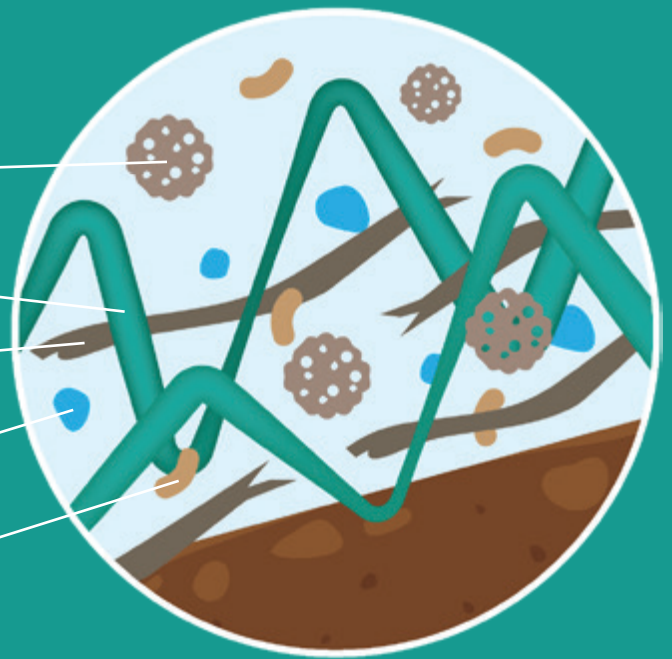
Micro-pore particles enhance water and nutrient retention while contributing to erosion effectiveness.

Interlocking matrix fibres increase strength and durability.

100% thermally refined wood fibres produce high yields, extensive coverage, and eliminate potential weed seeds and pathogens.

Biopolymers and water absorbents are 100% non-toxic to enhance overall performance and project success.

Granular cell dispersion ensures that product elements are mixed and distributed evenly. Interlocking matrix fibres increase strength and durability.



7 Essential Benefits of EnviroLoc® BFM



Lasting Performance

Immediately bonds to the soil surface and effectively reduces turbidity of runoff, which increases functional longevity.



Higher Water Retention

Thermally refined wood fibres and micro-pore particles deliver up to 15 times more water-holding capacity over standard hydromulch.



Weed, Pest & Pathogen Free

Our solution is free from weeds, pests, diseases and pathogens.



Faster Growth

As well as retaining more water, the wood fibres also provide a stable temperature to aid the germination process.



Sustainable

Absorbs water rapidly to form a homogenous slurry that ensures evenly distributed strands of grass.



Scientifically Proven

Contains 100% of the highest quality materials, while scientific soil analysis ensures the best chance of success.



Guaranteed Results

Our products are developed by leading agronomists, horticulturists and soil scientists, and are backed by a results guarantee.

How EnviroLoc® BFM works

EnviroLoc® Hydromulching BFM application is a two-step process. Essentially a heavy-duty growth medium.

The first pass involves spraying EnviroLoc® BFM and site-specific seed mix over the surface to ensure optimal seed-to-soil contact. The second pass is applied without seed which forms a protective blanket.

This extra pass protects the seed mix from fauna and harsh weather conditions while providing an optimal germination environment.

Proprietary binders and tackifiers make EnviroLoc® BFM ideal for revegetating on steep slopes and uneven terrain.



1 Depleted Soils

Soils associated with disturbed lands are characteristically lacking much needed organic matter, nutrients and biological activity.

2 EnviroSoil® application

The addition of a topsoil replacement, EnviroSoil® provides a blend of key soil building components to create an optimum growth environment.

3 Hydraulically applied seed

A combination of water, seed and amelioration are applied to the substrate first to ensure effective seed-to-soil contact.

4 EnviroLoc® Hydromulching BFM

A second pass is undertaken, consisting of EnviroLoc® Hydromulch BFM combined with proprietary binders to ensure erosion effectiveness.

5 Drone Fertilisation (optional)

4-8 weeks after application and utilising a drone, a blend of site-specific fertiliser, soil conditioners and probiotics can be applied to targeted areas.

6 Quality Growth

A combination of optimum growing conditions and adequate time promotes and achieves outstanding establishment of seeded plants.

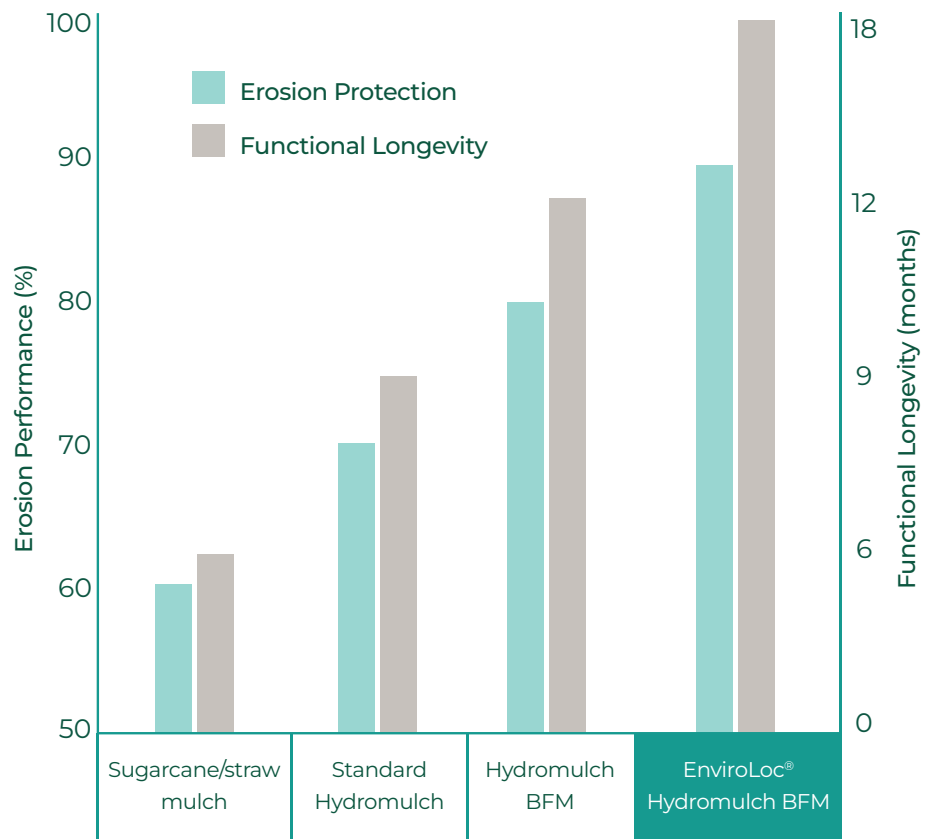
Why does it work so well?

Erosion Control Performance

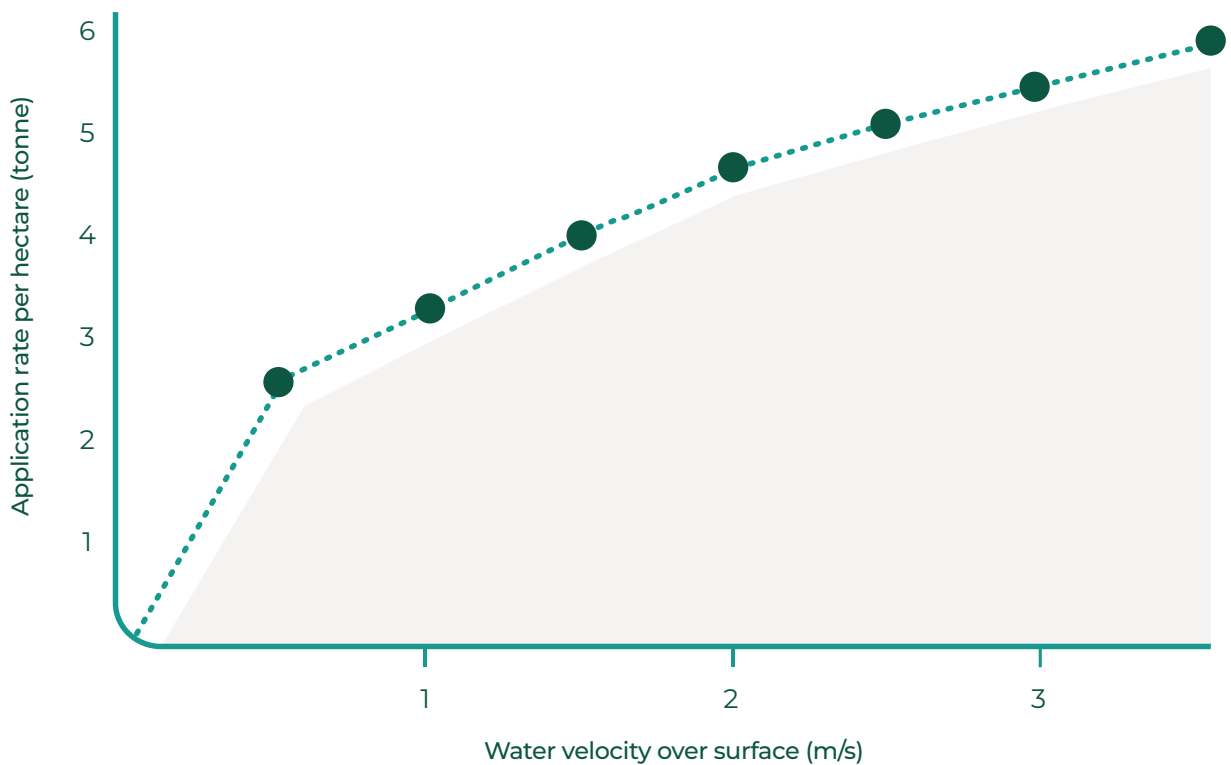
The adaptable yet secure matrix works to establish growth, control erosion and increase functional longevity. This allows for dormancy throughout dry periods and ensures the stability of the revegetation efforts.

Functional Longevity

EnviroLoc® BFM protects for up to 18 months when taking into consideration the physical composition of the mulch, as well as site-specific conditions such as temperature, moisture, nutrient density, sun exposure and other environmental factors.



Water flow resistance



Application of EnviroLoc® BFM

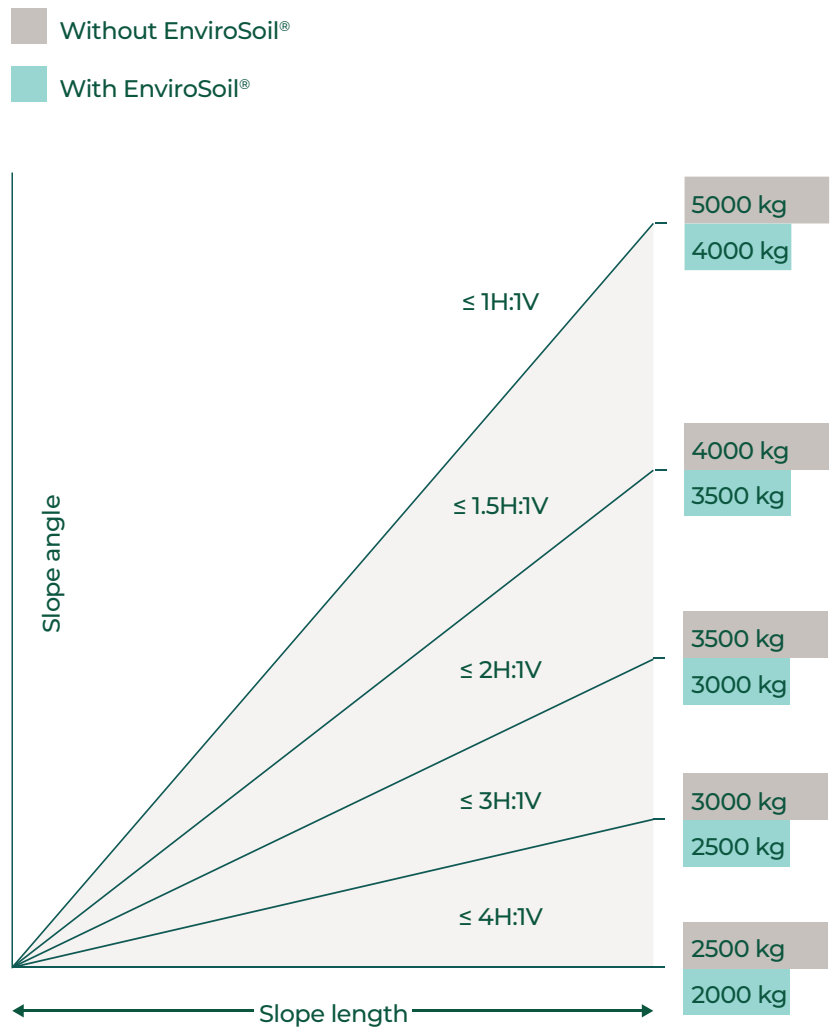
Utilising HydroRig equipment, EnviroLoc® BFM is applied with water as a carrier directly onto substrates that may be uneven, severely sloped or prone to erosion.

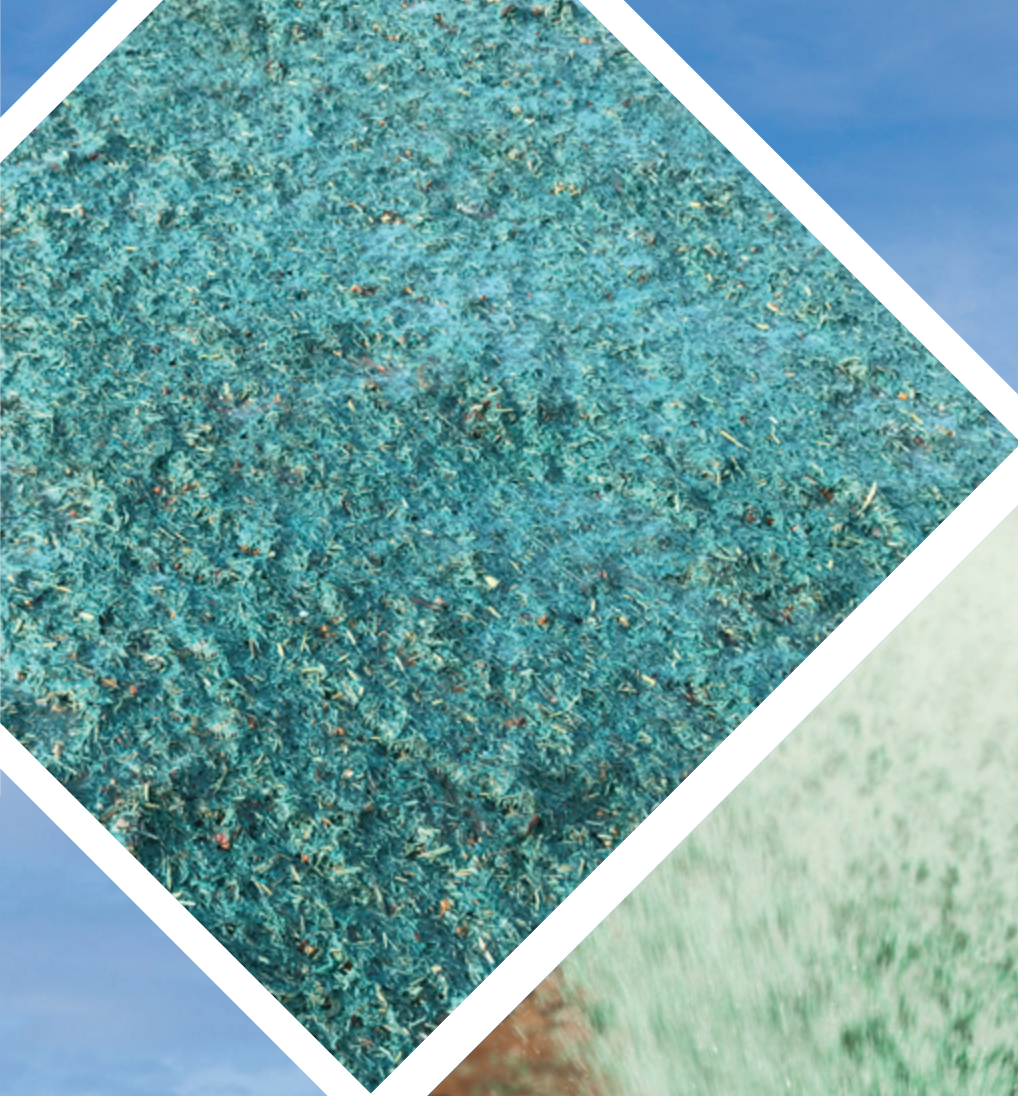
Once dry, the matrix can be repeatedly hydrated while holding soil and seed without washing away. EnviroLoc® BFM is perfect for sites prone to extreme weather conditions where hydraulic growth mediums (HGMs) alone may not be sufficient to achieve success.

The combination of EnviroSoil® and EnviroLoc® BFM creates the ultimate environment for sustainable growth. Capable of reviving depleted and disturbed land, the active components of EnviroSoil® loosen compacted soil and penetrates deep into the surface to provide an ideal growing environment.

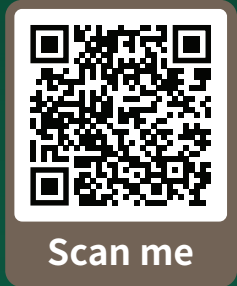


For more information about EnviroSoil® scan this code





EnviroLoc® BFM is formulated to meet the highest standards of environmental efficiency



100% Success Rate Guaranteed

SUPPLY

Our products and services are supported by the expertise and consultation of our specialist team of agronomists, horticulturalists and soil scientists. EnviroLoc® BFM is made with the highest quality materials which are extensively tested for safety and performance on some of the most depleted and degraded soils in Australia. We are confident you will achieve project success first time.

APPLY

Our highly trained technicians utilise specialist equipment to apply products with precision and accuracy, meeting Australian Safety, Environmental and Quality standards. Surpassing this, our ability to utilise drone technology for the application of solutions improves the quality and efficiency of our operations. Each project comes with a tailored Quality Management Plan and an Inspection & Test Plan (ITP) to identify and record project specifications and requirements.

GUARANTEE

Our scientifically developed solutions and expert application methods enable us to deliver an end-to-end solution which makes this guarantee possible. Each project solution is tailored for specific site requirements and longevity targets which requires a tailored guarantee to ensure success for your project.



Call **1300 182 182**
or visit **erizon.com.au**

