



# FibreLoc<sup>®</sup>

Wood Fibre Mulch for Dust Suppression

Dust suppression  
for extreme  
conditions



A product by



Australian Environmental Solutions



# ENGINEERED FOR EXTREME CONDITIONS



## Introducing FibreLoc®

FibreLoc® is a superior dust suppression product. Scientifically engineered for the harshest of conditions where polymer solutions aren't suitable and sustainable longevity is required.

Ideal for exposed substrates with high salinity levels, such as Tailing Storage Facilities (TSFs), FibreLoc® succeeds where polymer-only solutions fail, due to its unique intersecting natural wood fibres and sustainable binders. FibreLoc® creates a flexible blanket, ideal for uneven terrain that is prone to movement.

The solution's composition, once in contact with the substrate, provides functional longevity of up to 24 months (depending on environmental conditions).

- Designed to withstand harsh weather conditions
- Resistant to high salinity levels
- Engineered for even coverage over uneven terrain
- Flexible for shifting substrates
- Optional seed can be added to achieve vegetation/dust suppression objectives
- Environmentally sustainable
- Extensively tested and proven
- Australian-made



# 3D Fibre Matrix Technology

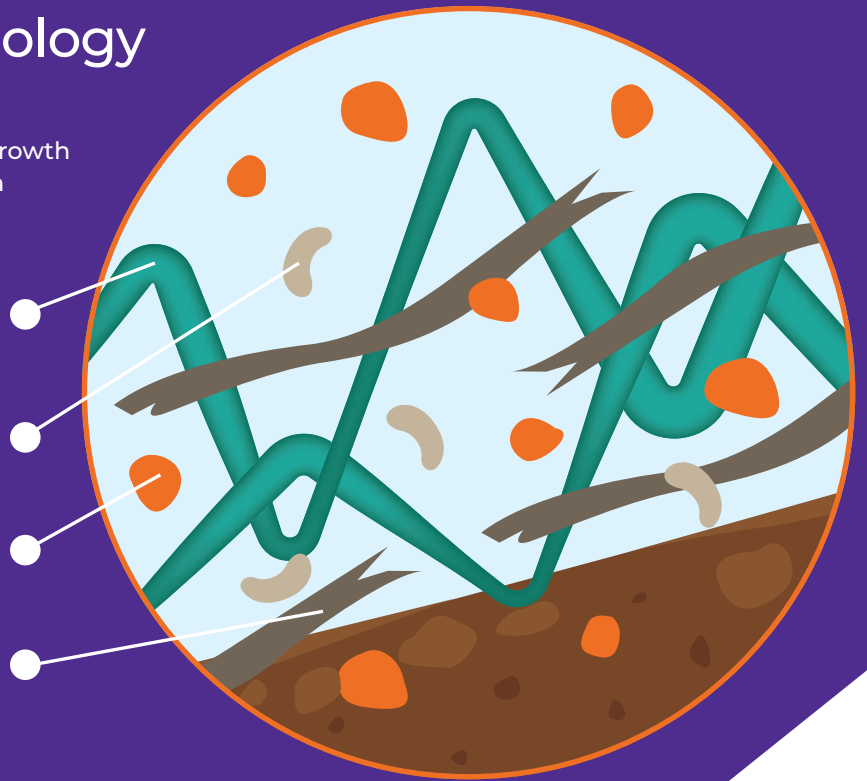
The unique blend of chemical and mechanical bonding techniques enables the engineered growth medium in place to promote seed germination if required. The following benefits support the engineered formula:

100% thermally refined wood fibres deliver extensive coverage, while being free of weed seeds and pathogens.

Biopolymers and water absorbents are 100% non-toxic to enhance overall performance and project success.

Granular cell dispersion ensures that product elements are mixed and distributed evenly.

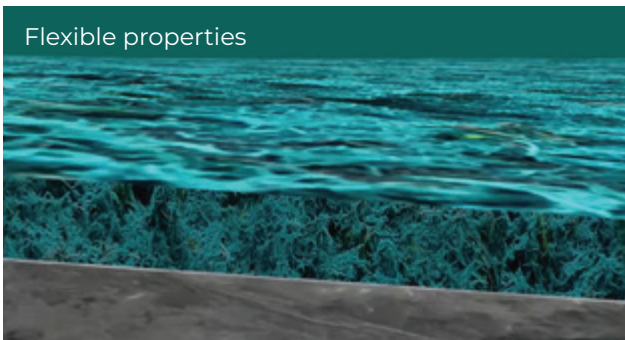
Interlocking matrix fibres increase strength and durability.



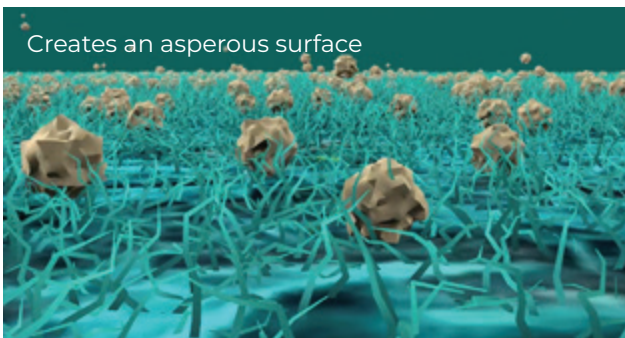
## How FibreLoc® works

FibreLoc® contains interlocking organic wood fibres to form a flexible and stable blanket, suitable for uneven and dynamic substrates, such as TSFs. FibreLoc® can be applied with seed, as the wood fibre growth medium provides ideal conditions for germination. The wood fibre's asperous surface acts as a catchment zone, trapping rolling dust caused by strong winds. The engineered construct of FibreLoc® enables it to re-establish itself if damaged by shifting surfaces.

Flexible properties



Creates an asperous surface



## Application

FibreLoc® is consistently mixed by inbuilt agitators within the holding tanks of our purpose-built HydroRigs to ensure that a uniform application is achieved. FibreLoc® is applied via cannon or hose directly onto the contours of the surface. It dries to form a flexible, yet durable, bonded fibre matrix which acts as a blanket, providing superior dust suppression and erosion control for unpredictable conditions.

### Common application methods:

Purpose-built HydroRig equipment enables up to 50,000 square metres of product coverage per day. This technology will significantly reduce project time and costs while accelerating the reduction of dust.

#### Hose

With the capacity to reach distances over 400 metres, hoses and pumps can safely cover steep and inaccessible slopes and delicate tight spaces with the addition of extended hose reels.



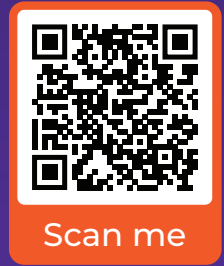
#### Cannon

Roof-mounted hydraulic cannons are utilised to apply the product efficiently from a distance of up to 100 metres. Where required, dual cannons can be used to apply the product from both sides of the spray zone simultaneously.





FibreLoc<sup>®</sup> is formulated to meet the highest standards of environmental efficiency



# 100% Success Rate Guaranteed

## *SUPPLY*

Our products and services are supported by the expertise and consultation of our specialist team of agronomists, horticulturalists and soil scientists. FiberLoc<sup>®</sup> is made with the highest quality materials which are extensively tested for safety and performance on some of the most depleted and degraded soils in Australia. We are confident you will achieve project success first time.

## *APPLY*

Our highly trained technicians utilise specialised equipment to apply products with precision and accuracy, meeting Australian Safety, Environmental and Quality standards. Surpassing this, our ability to utilise drone technology for the application of solutions improves the quality and efficiency of our operations. Each project comes with a tailored Quality Management Plan and an Inspection & Test Plan (ITP) to identify and record project specifications and requirements.

## *GUARANTEE*

Our scientifically developed solutions and expert application methods enable us to deliver an end-to-end solution which makes this guarantee possible. Each project solution is tailored for specific site requirements and longevity targets, which require a tailored guarantee to ensure success for your project.



Call **1300 182 182**  
or visit **erizon.com.au**

