



# EnviroLoc

Hydromulching BFM

Advanced erosion  
control & growth  
performance



A product by



Australian Environmental Solutions

# THE NEXT DRIVE IN REVOLUTIONARY EROSION CONTROL



## Introducing EnviroLoc

EnviroLoc Hydromulching BFM is engineered to provide superior performance in the areas of erosion control effectiveness and growth establishment. Thermally modified wood fibres form the foundation of EnviroLoc's ability to increase water retention and airflow exchange for improved seed germination.

The wood fibres are engineered to withstand challenging environmental conditions where high levels of water velocity resistance will be required. The ability for these fibres to hold up to 20-times their own weight in water will also provide greater moisture retention around the seed where evaporation rates are high, unlike alternative mulches that are hydrophobic.

The application process is also key to the success of this solution. The initial hydraulic application of seed is essential in maximising the native seed to soil contact and subsequent germination result. A secondary pass of the EnviroLoc wood fibre mulch will then be hydraulically applied over the top of the seed for additional erosion protection.



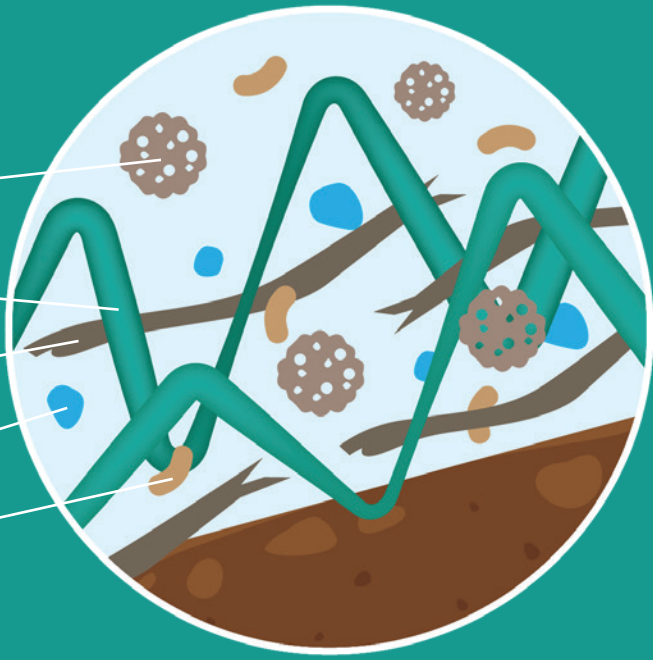
SUPPLY / APPLY / GUARANTEE



- Increased erosion protection
- Provides greater soil cover
- Improved plant germination due to higher water retention.
- Long fibres ensure there is no reduction in infiltration and air exchange
- Environmentally friendly containing non-toxic recycled and biodegradable materials

# 3D Fibre Matrix Technology

The unique blend of chemical and mechanical bonding techniques enables the engineered growth medium in place to promote seed germination. The following benefits support the engineered formula:



Micro-pore particles enhance water and nutrient retention while contributing to erosion effectiveness.

Interlocking matrix fibres increase strength and durability.

100% thermally refined wood fibres produce high yield, extensive coverage, and eliminate potential weed seeds and pathogens.

Binders and water absorbents are 100% non-toxic to enhance overall performance and project success.

Dispersion granules ensure that the elements are evenly mixed and uniformly distributed.

## 7 Essential Benefits of EnviroLoc



### Lasting Performance

Immediately bonds to the soil surface and effectively reduces turbidity of runoff which increases functional longevity.



### Higher Water Retention

Thermally refined wood fibres and micropore particles deliver up to 15 times more water-holding capacity over standard hydromulch.



### Weed, Pest & Pathogen Free

Our solution is free from weeds, pests, diseases and pathogens.



### Faster Growth

As well as retain more water, the wood fibres also provide a stable temperature to aid the germination process.



### Sustainable

Absorbs water rapidly to form a homogenous slurry that ensures evenly distributed strands of grass.



### Scientifically Proven

Contains 100% of the highest quality materials, while scientific soil analysis ensures the best chance of success.



### Guaranteed Results

Our products are not only developed by leading agronomists, horticulturists and soil scientists, they are also backed by a guarantee.

# How EnviroLoc works

EnviroLoc Hydromulching BFM is a two-step application process. Essentially a heavy-duty growth medium, BFM employs a combination of two passes over the surface area.

The first step involves spraying a mix of seed, fertiliser and water over the surface, while the second step consists of

spraying over the applied seed with a slurry blended with EnviroLoc Hydromulching BFM and proprietary binders.

Applying the seed first maximises germination through optimal seed-to-soil contact. The subsequent BFM application works to provide greater erosion control on steep batters, slopes, verges and flat areas.



6

## Quality Growth

A combination of optimum growing conditions and adequate time promote and achieve outstanding establishment of seeded plants.

5

## Drone spraying (optional)

4-8 weeks after application and utilising a drone, a blend of site-specific fertiliser, soil conditioners and probiotics are sprayed over the revegetated area.

4

## EnviroLoc Hydromulching BFM

A second pass is undertaken, consisting of EnviroLoc Hydromulch BFM combined with proprietary binders to ensure erosion effectiveness.

3

## Hydraulically applied seed

A combination of water, seed and amelioration are applied to the substrate first to ensure effective seed to soil contact.

2

## EnviroSoil application

The addition of a topsoil replacement, EnviroSoil provides a blend of key soil building components to create an optimum growth environment.

1

## Depleted Soils

Soils associated with disturbed lands are characteristically lacking much needed organic matter, nutrients and biological activity.

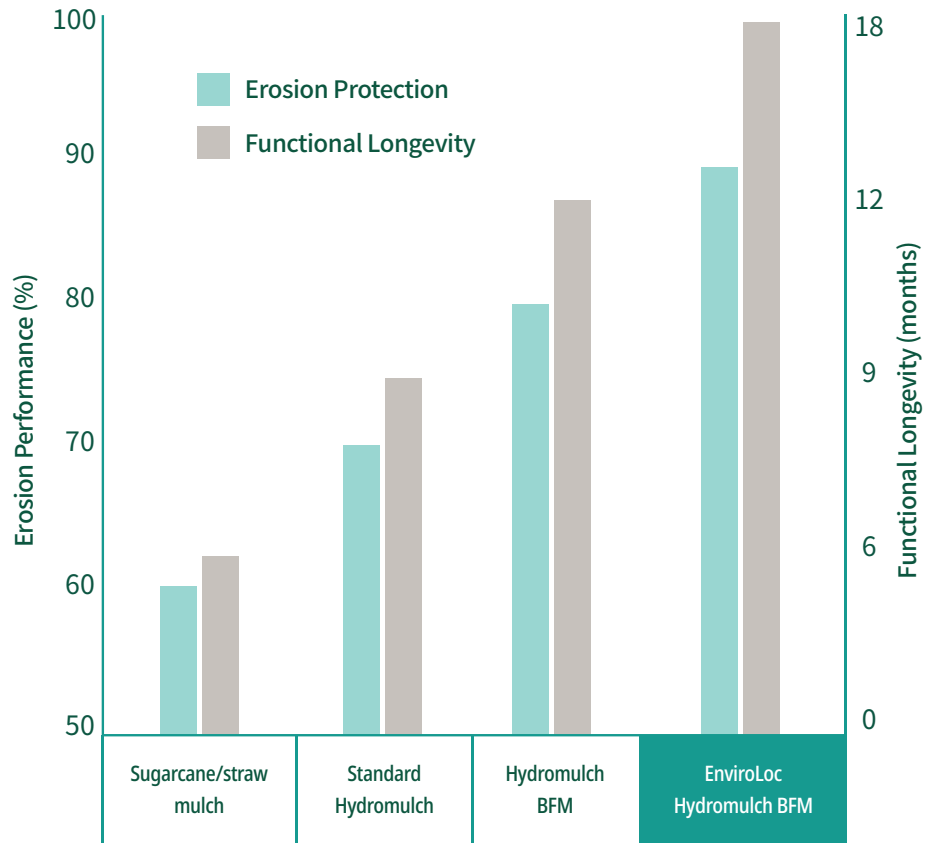
# Why does it work so well?

## Erosion Control Performance

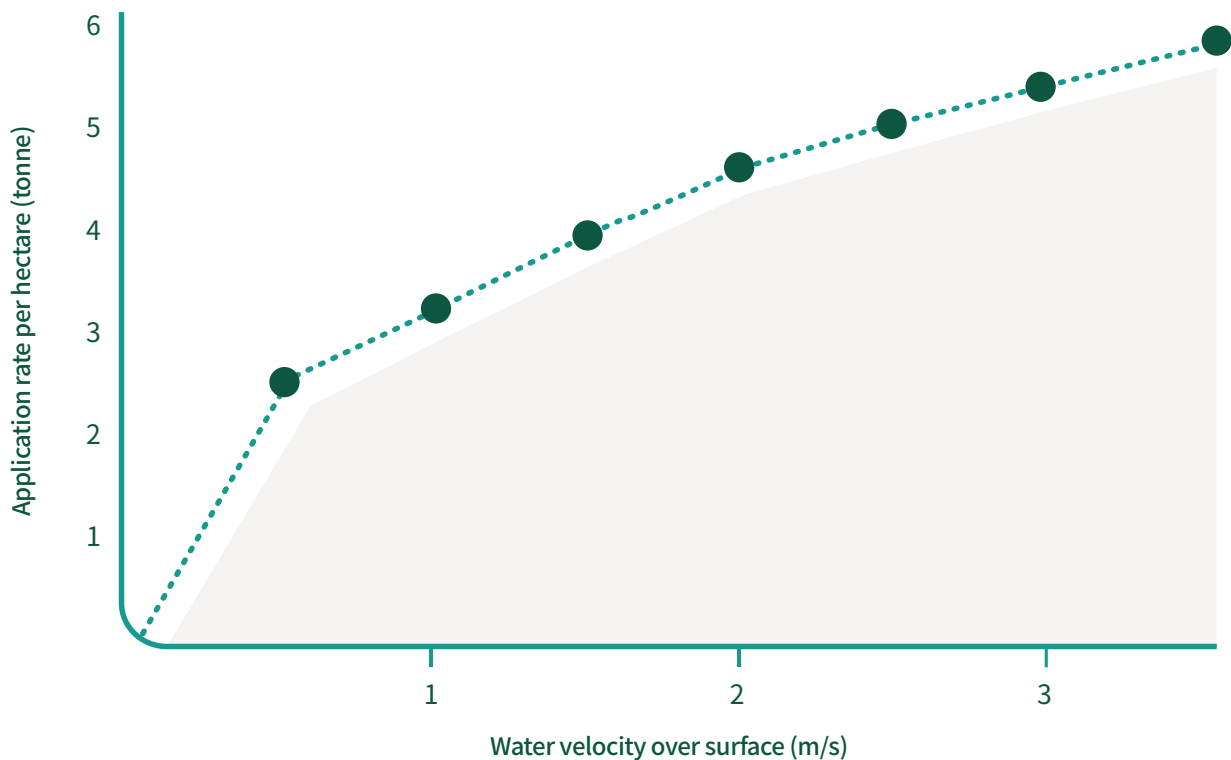
The flexible, yet stable matrix works to establish growth, control erosion and increase functional longevity, allowing for dormancy throughout arid periods and ensuring the stability of the revegetation efforts.

## Functional Longevity

EnviroLoc Hydromulching BFM can last up to 18 months when taking in to consideration the physical composition of the mulch as well as site specific conditions such as temperature, moisture, nutrient density, sun exposure and other environmental factors.



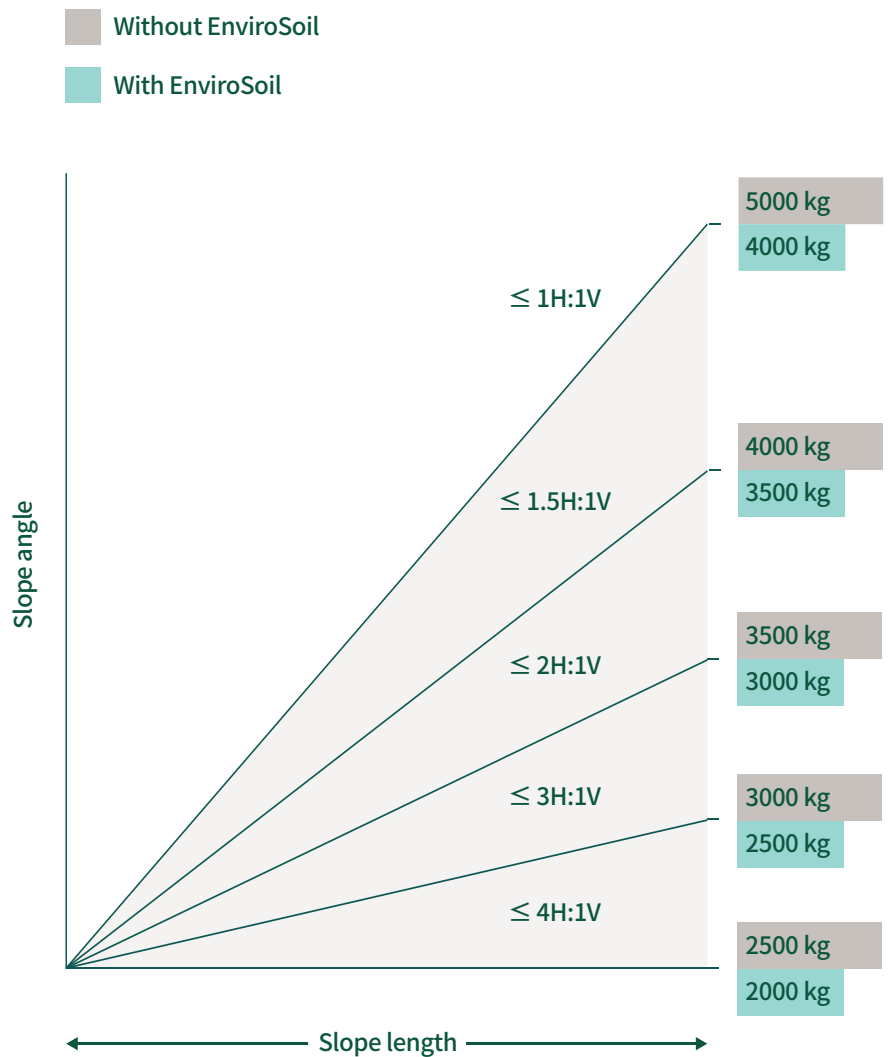
# Water flow resistance



# Application of EnviroLoc Hydromulching BFM

Utilising a hydroseeder, EnviroLoc is applied with water as a carrier onto unusually arid substrates, uneven, severely sloped or soil conditions prone to erosion. EnviroLoc conforms to the contours of the ground and dries to form a Bonded Fibre Matrix. Once dry, the matrix can be hydrated repeatedly and will hold soil and seed without washing away. It provides a cost-effective and safe alternative to traditional erosion control blankets that are prone to voiding and bridging. EnviroLoc is designed for sites with extreme conditions where HGMs alone may not be the optimal solution to achieve success.

We understand that each project is different with unique challenges and goals. As a result, Erizon created EnviroLoc as a customisable solution, allowing soil amendments to be integrated for sustainable vegetation, resulting in project success.





Formulated to meet the highest standards of environmental efficiency



# 100% Success Rate Guaranteed



## *SUPPLY*

Our products and services are supported by the expertise and consultation of our specialist team of agronomists, horticulturalists and soil scientists. EnviroLoc is made with the highest quality materials which are extensively tested for safety and performance on some of the most depleted and degraded soils in Australia. We are confident you will achieve project success the first time around.



## *APPLY*

Our highly trained technicians utilise specialist equipment to apply products with precision and accuracy, meeting Australian Safety, Environmental and Quality standards. Surpassing this, our ability to utilise drone technology for the application of solutions improves the quality and efficiency of our operations. Each project comes with a tailored Quality Management Plan and an Inspection & Test Plan (ITP) to identify and record project specifications and requirements.



## *GUARANTEE*

Our scientifically developed solutions and expert application methods enable us to deliver an end-to-end solution which makes this guarantee possible. Each project solution is tailored for specific site requirements and longevity targets which requires a tailored guarantee to make sure our clients reach those goals.

